



Key Indicator - 4.3 IT Infrastructure

4.3.1 Institution frequently updates its IT facilities and provides sufficient bandwidth for internet connection

Student Biometric Device

Implementing a student biometric system in hostel ensures secure and efficient monitoring of students' movements. Parents can be reassured of their child's safety as the system accurately records entry and exit times. This technology enhances hostel security by preventing unauthorized access. In case of emergencies or unexcepted absences, administrators can quickly identify students' whereabouts. Moreover, it streamlines administrative tasks, reducing manual attendance tracking. This biometric system promotes transparency and accountability, fostering a safe and conducive environment for students' academic and personal growth.



HOSTEL - A BLOCK



CRITERION IV

STUDENT BIOMETRIC DEVICE



HOSTEL - A BLOCK



HOSTEL - B BLOCK



CRITERION IV

STUDENT BIOMETRIC DEVICE



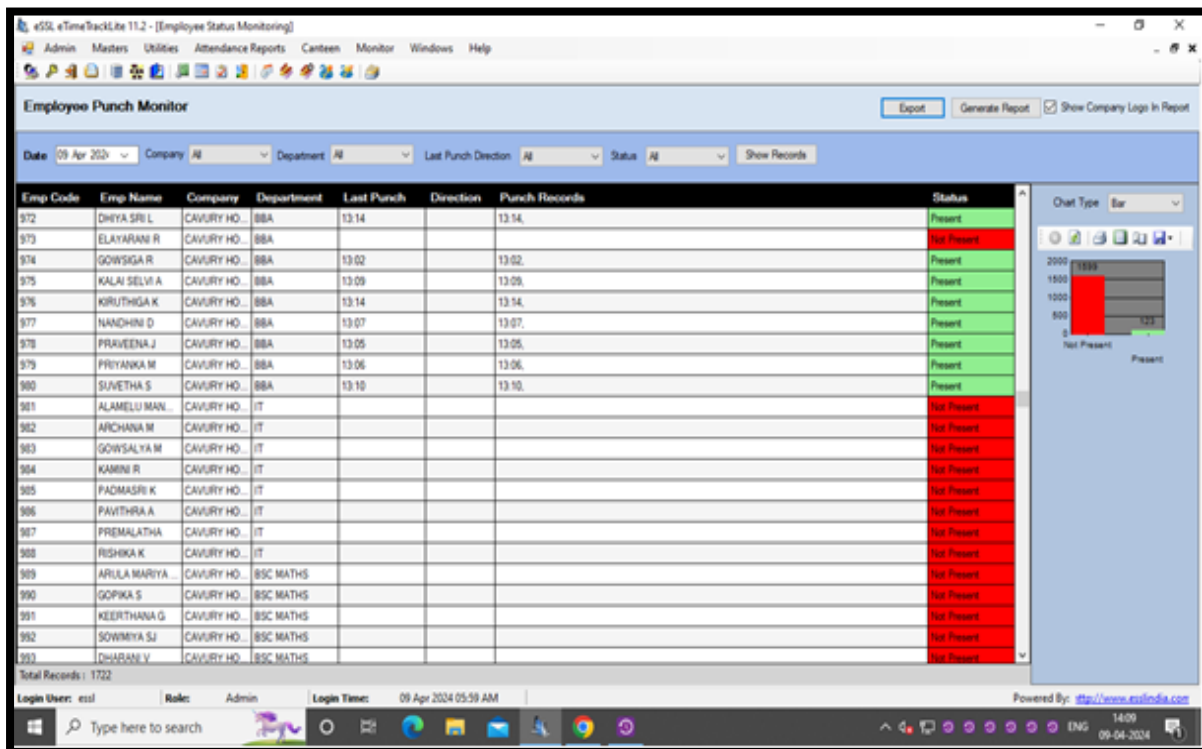
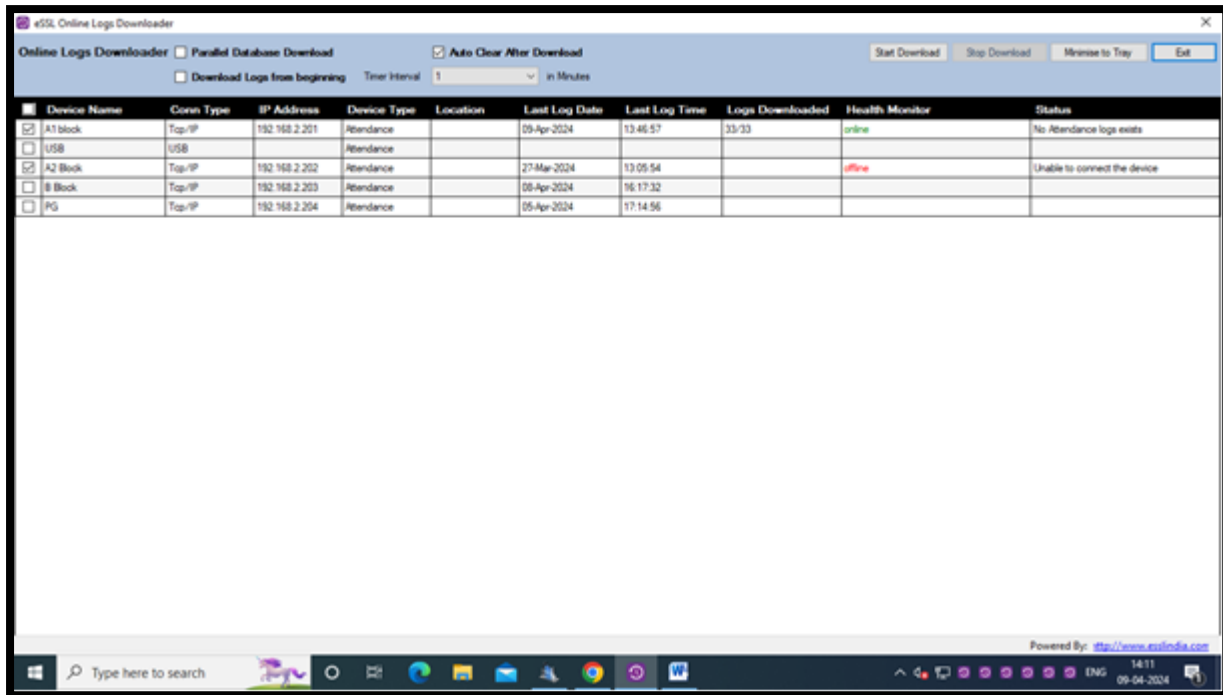
HOSTEL - PG BLOCK



CRITERION IV

STUDENT BIOMETRIC DEVICE

Biometric software





CRITERION IV

STUDENT BIOMETRIC DEVICE

The screenshot shows a web browser window displaying a dashboard for 'WHALE SOFT SYSTEMS'. The page title is 'Delivery Logs' and the URL is 'smslogin.whalesofttrichy.in/Dashboard.php?page=delivery-report'. The dashboard includes a sidebar with navigation options like Dashboard, Compose SMS, Manager, Reports, Campaign Report, Filter Campaign Report, Credit Usages, and Senderid Wise. The main content area shows a table of delivery logs with the following data:

SL NO.	SENT DATETIME	SCHEDULE TIME	ROUTE	CAMPAIGN NAME	MESSAGE	SENDER	TYPE	NO. OF SMS	CREDIT	URL SUMMARY	VIEW	AC
1	09-Apr-2024 06:45:13 AM	---	Transactional	---	Your Daughter 1691 RENUKA M just left Hostel at 2024-04-09 06:39:47 . CCW Hostel, Trichy - WHALESOFT	CCWHST	API	1	1	---		